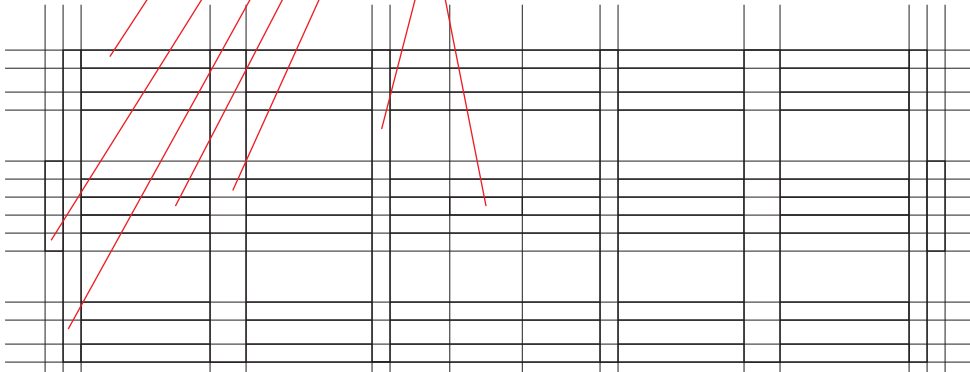
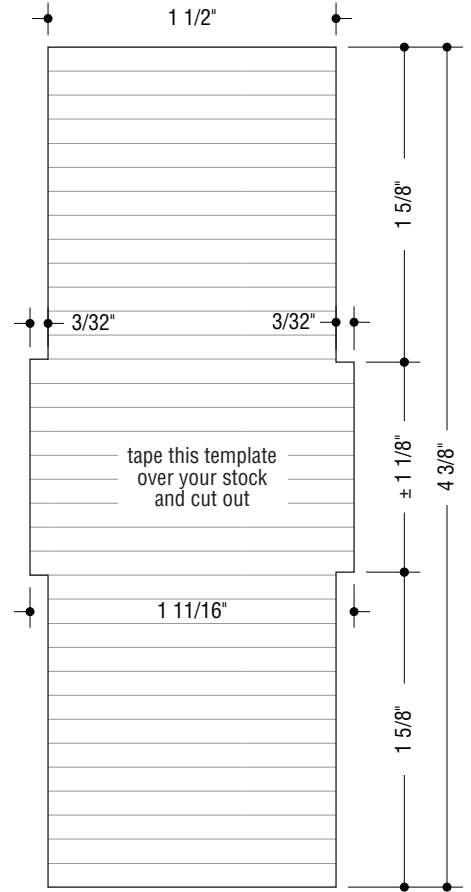


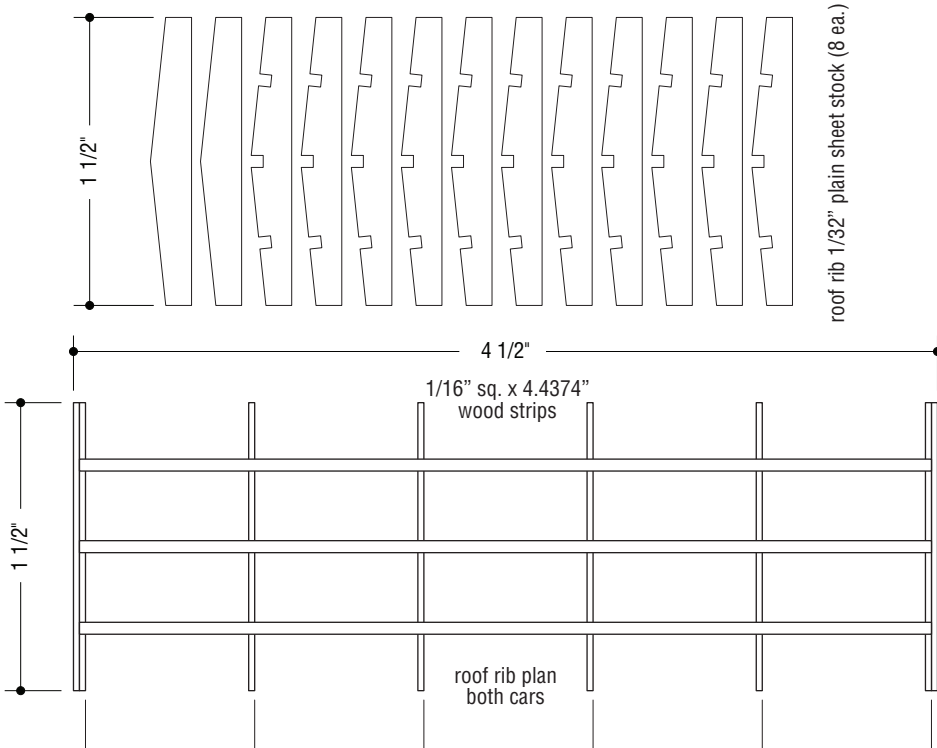
- long frame members  $3/32" \times 5/32" \times 4\ 5/16"$  (make 6)
- buffer blocks  $3/32" \times 1/8" \times 15/32"$  (make 2)
- end beams  $3/32" \times 5/32" \times 1\ 5/8"$  (make 2)
- center filler pieces  $3/32" \times 5/32" \times \pm 7/8"$
- Bolsters  $1/16" \times 1\ 5/8"$  (make 2)
- needle beams  $3/32"$  sq. (make 2)
- brake pivot support block  $3/32" \times 5/32" \times 3/8"$  (make 1)  
\*may vary depending on type of brake system chosen



framing plan both cars

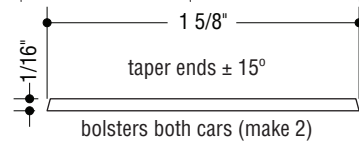


decking plan box car  
 $1/32"$  w/  $1/8"$  scribe

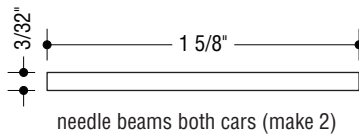


roof rib  $1/32"$  plain sheet stock (8 ea.)

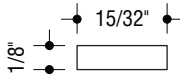
roof rib plan  
both cars



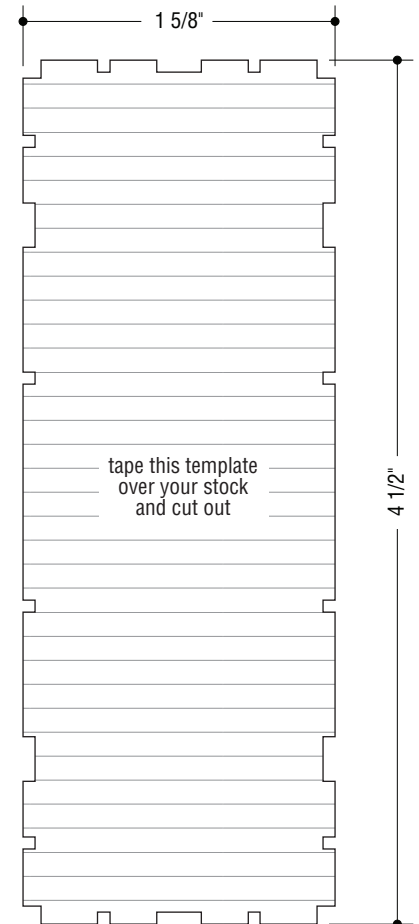
bolsters both cars (make 2)



needle beams both cars (make 2)



buffer blocks both cars (make 2)



decking plan o.f. box car  
 $1/32"$  w/  $1/8"$  scribe

# Sweet Haven Railroad boxcar build addendum 2

scale  $1/4" = 1'-0"$  (full size for On30)

