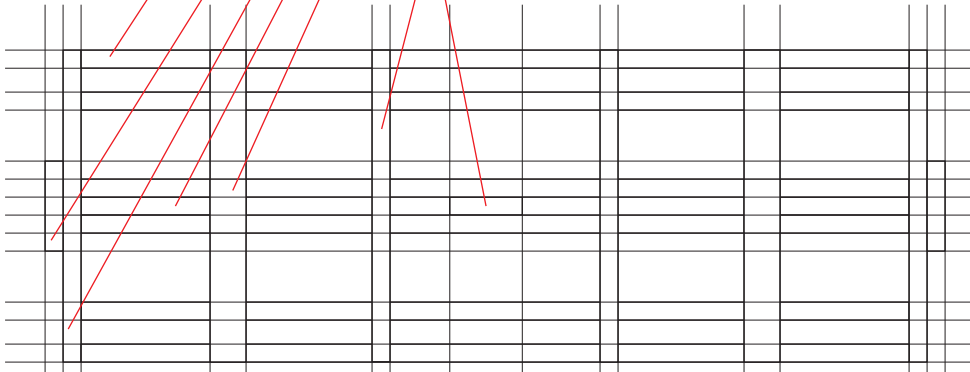
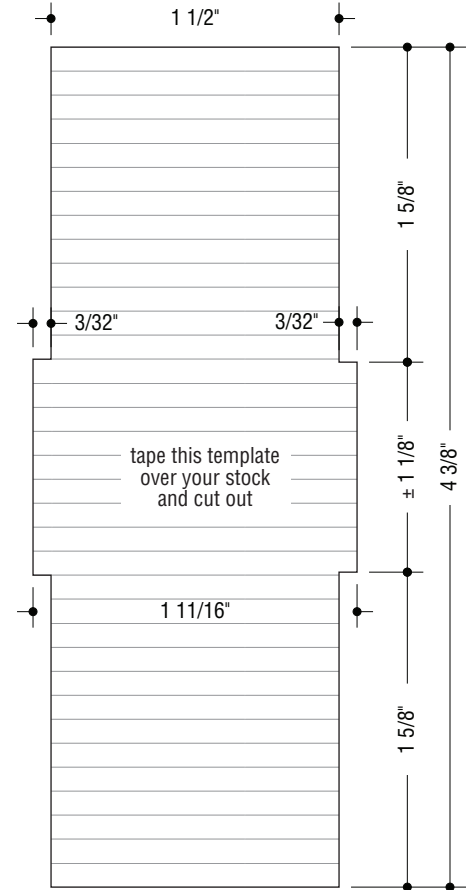


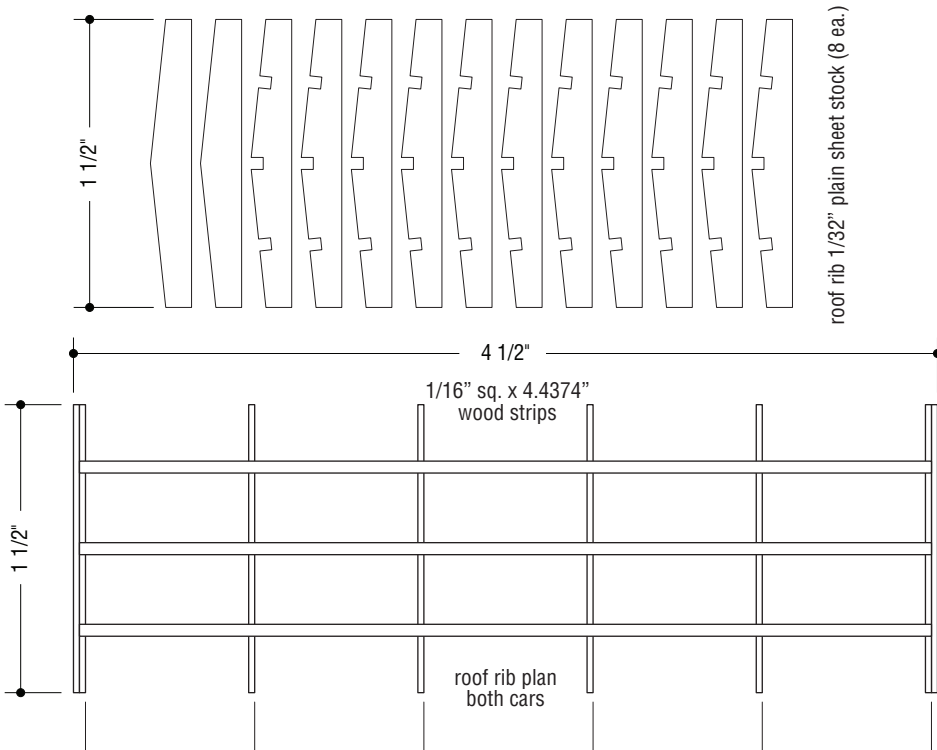
- long frame members $3/32" \times 5/32" \times 4\ 5/16"$ (make 6)
- buffer blocks $3/32" \times 1/8" \times 15/32"$ (make 2)
- end beams $3/32" \times 5/32" \times 1\ 5/8"$ (make 2)
- center filler pieces $3/32" \times 5/32" \times \pm 7/8"$
- Bolsters $1/16" \times 1\ 5/8"$ (make 2)
- needle beams $3/32"$ sq. (make 2)
- brake pivot support block $3/32" \times 5/32" \times 3/8"$ (make 1)
*may vary depending on type of brake system chosen



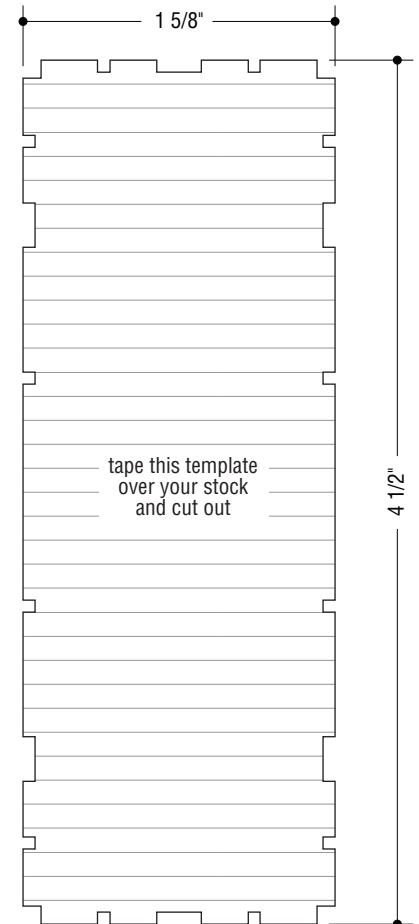
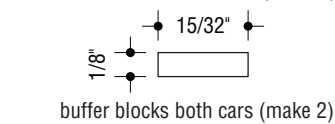
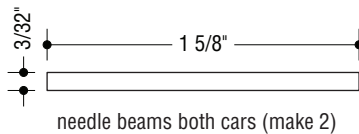
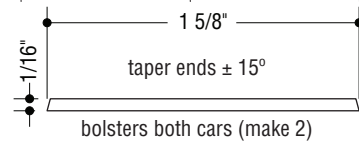
framing plan both cars



decking plan box car
 $1/32"$ w/ $1/8"$ scribe



roof rib plan both cars



decking plan o.f. box car
 $1/32"$ w/ $1/8"$ scribe

Sweet Haven Railroad boxcar build addendum 2.1

scale $1/4" = 1'-0"$ (full size for On30)

